



SAILING INSTRUCTIONS

2023 Open Dutch Championships

Finn, Dart 18, F18

Class Event F16

15 September – 17 September 2023

(F16 class only: 16 – 17 September 2023)

Location: IJsselmeer off Medemblik, the Netherlands

The Organizing Authority will be the Koninklijke Zeil- en Roeivereniging “Hollandia” (RYC Hollandia) in conjunction with the Finn Club Holland and the Dart 18, F18 and F16 Dutch Class Associations under the auspices of the Royal Netherlands Watersports Association (RNWA).

The notation '[NP]' in a rule means that a boat may not protest another boat for breaking that rule. This changes RRS 60.1(a).

1 RULES

- 1.1 The regatta will be governed by the rules as defined in *The Racing Rules of Sailing* (RRS).

2 CHANGES TO SAILING INSTRUCTIONS

- 2.1 Any change to the sailing instructions will be posted before 09:00 on the day it will take effect, except that any change to the schedule of races will be posted by 20:00 on the day before it will take effect.

3 COMMUNICATIONS WITH COMPETITORS

- 3.1 Notices to competitors will be posted on the Official Notice Board located on at <https://www.manage2sail.com/en-US/event/c77c828b-0d9b-4e25-842c-976fa0d8da62#!/>. Notices may also be posted near the entrance of the race office.

- 3.2 The race office is located at the Regatta Center Medemblik.

4 CODE OF CONDUCT

- 4.1 **[DP]** Competitors and support persons shall comply with any reasonable request from race officials.





4.2 **[NP] [DP]** The instructions of the harbor masters, beach masters and site managers shall be followed strictly.

4.3 **[DP]** Competitors and support persons shall handle any equipment or place advertising provided by the organizing authority with care, seamanship, in accordance with any instructions for its use and without interfering with its functionality.

5 SIGNALS MADE ASHORE

5.1 Signals made ashore will be displayed at the official signal mast, located close to the race office.

5.2 When flag AP  is displayed ashore '1 minute' is replaced by 'not less than 60 minutes' (This changes Race Signal AP).

5.3 **[DP] [NP]** Flag D  displayed ashore with one sound means: 'Boats shall not leave the shore until this signal is made. The warning signal will not be made before the scheduled time or less than 60 minutes after flag D is displayed.'

6 SCHEDULE OF RACES AND STARTING SEQUENCE

6.1 The schedule of races is as follows:

Classes	Number of scheduled races		
	Friday	Saturday	Sunday
F18	3	4	4
F16	-	4	4
Dart 18	3	4	3
Finn	3	4	3

One extra race per day may be sailed provided that no class becomes more than one race ahead of schedule and the change is made according to SI 2.1.

6.2 Starting sequence:

F18 & F16 Dart 18 Finn

After the first race of a day, the race committee may change the starting sequence.



6.3 The scheduled time of the warning signal for the first race of the first class each day is:

Friday 15 September	12:30
Saturday 16 September	10:30
Sunday 17 September	10:30

6.4 To alert boats that a race or sequence of races will begin soon, the orange starting line flag on the race committee signal vessel will be displayed with one sound at least five (5) minutes before a warning signal is made.

6.5 On Sunday no warning signal will be made after 15:00.

7 CLASS FLAGS

The Class flags are:

- F18 & F16 : code flag E
- Dart 18 : code flag Q
- Finn : code flag F

8 RACING AREA

8.1 SI Addendum 1 shows the approximate location of the racing area.

8.2 The starting area is defined as a rectangle covering the area 100 meters to both windward and leeward of the starting line and 50 meters to both port and starboard of either end of the starting line.

9 COURSES

9.1 The diagram in SI Addendum 2 shows the courses, including the approximate angles between legs, the order in which marks are to be passed, and the side on which each mark is to be left.

9.2 No later than the warning signal, the race committee signal vessel will display the course signal and the approximate compass bearing of the first leg.

9.3 Courses will not be shortened. This changes RRS 32.

10 MARKS

10.1 The color and shape of the marks 1, 2, 3 and 4 will be described in SI Addendum 2.

10.2 A race committee vessel signaling a change of a leg of the course is a mark as provided in SI 13.2.

10.3 The starting marks will be a race committee vessel at the starboard end and a



dan buoy at the port end.

- 10.4 The finishing marks will be a race committee vessel and a dan buoy displaying a blue flag.

11 OBSTRUCTIONS

There are no areas designated as obstructions.

12 THE START

- 12.1 The starting line will be between staffs displaying an orange flag on the starting marks.
- 12.2 **[NP][DP]** Boats whose warning signal has not been made shall avoid the starting area during the starting sequence for other classes.
- 12.3 A boat that does not start within four (4) minutes after her starting signal will be scored Did Not Start (DNS) without a hearing. This changes RRS A5.1 and A5.2.

13 CHANGE OF THE NEXT LEG OF THE COURSE

- 13.1 To change the next leg of the course, the race committee will move the original mark (or the finishing line) to a new position.
- 13.2 Except at a gate, boats shall pass between the race committee vessel signaling the change of the next leg and the nearby mark, leaving the mark to port and the race committee vessel to starboard. This changes RRS 28.

14 THE FINISH

The finishing line will be between staffs displaying a blue flag on the finishing marks.

15 PENALTY SYSTEM

For Dart 18, F18 and F16 class only: RRS 44.1 is changed so that the Two-Turns Penalty is replaced by the One-Turn Penalty.

16 TIME LIMITS AND TARGET TIMES

- 16.1 Time limits and target times for each class are as follows:

Race Time Limit	75 minutes
Mark 1 Time Limit	20 minutes
Target Time	45 minutes
Finishing Window	15 minutes

- 16.2 If no boat (of that class) has passed Mark 1 within the Mark 1 Time Limit the race will be abandoned.
- 16.3 The Finishing Window is the time for boats (of that class) to finish after the first



boat of their class sails the course and finishes. Boats failing to finish within the Finishing Window will be scored Did Not Finish (DNF). This changes RRS 35, A4 and A5.

- 16.4 Failure to meet the target time (of that class) will not be grounds for redress. This changes RRS 62.1(a).

17 HEARING REQUESTS

- 17.1 For each class, the protest time limit is 75 minutes after the last boat in that class finishes the last race of the day or the race committee signals no more racing today, whichever is later. This time will be posted on the Official Notice Board.

- 17.2 Hearing request forms are available from the race office.

- 17.3 Notices will be posted no later than 30 minutes after the protest time limit to inform competitors of hearings in which they are parties or named as witnesses. Hearings will be held in the protest room, located at the race office, as soon as possible after receipt of the hearing request form.

- 17.4 A list of boats that have been penalized for breaking RRS 42 under Appendix P will be posted.

18 [NP][DP] SAFETY REGULATIONS

- 18.1 RRS 40 shall apply at all times while afloat. Flag Y will not be displayed. This changes RRS 40 and the Preamble of Part 4.

- 18.2 Any boat that retires from a race, or does not start a race shall inform the race committee on the water if possible and shall in all cases inform the race office as soon as possible.

- 18.3 Competitors who require assistance should so signify by blowing a whistle or waving one arm. The race committee reserves the right to assist competitors who, in the opinion of the race committee, require assistance, regardless of the wishes of the competitor.

- 18.4 When flag V is displayed on a race committee vessel, all coaches and support boats are permitted to enter the racing area and shall cooperate with the race committee in rescue assistance.

19 REPLACEMENT OF CREW OR EQUIPMENT

- 19.1 Substitution of competitors will not be allowed without prior written permission of the race committee. Replacement of the responsible person is not allowed.

- 19.2 **[DP]** In the event of damage, boats and equipment may only be substituted with the written permission of the race committee. If the damage occurs



later than 90 minutes before the first scheduled start on a racing day and before the start of the last race of the day, provisional verbal permission shall be obtained from the protest committee or the race committee and the written permission of the protest committee shall be applied for before the end of the protest time limit at the end of the day in which the substitution takes place.

20 EQUIPMENT CHECKS AND MEASUREMENT CHECKS

- 20.1 A boat or equipment may be inspected at any time for compliance with the class rules, notice of race and sailing instructions.
- 20.2 **[DP]** When instructed by a race official on the water, a boat shall proceed to a designated area for inspection.

21 SUPPLIED BOATS

Not applicable.

22 OFFICIAL VESSELS

Official boats will be identified as follows:

- a) Race committee vessels except for the ribs will fly a flag with "RC".
- b) Jury vessels will fly a yellow flag marked "JURY".
- c) Rescue vessels will fly a purple flag marked "RESCUE".
- d) Press vessels will fly a white flag marked "PRESS"

23 [DP] SUPPORT TEAMS

- 23.1 Support teams, including all support persons and support person vessels are allowed to be in the racing area but shall stay at least 100 m away from any boat racing.
- 23.2 During the races there shall be no communication between competitors and support persons.
- 23.3 After the first warning signal team support boats shall stay well clear of the starting, racing and finishing area until the last boat has finished.
- 23.4 Except in case of emergency, team leaders, coaches and other support persons shall stay outside areas where boats are racing from the time of their preparatory signal for the first start until all boats have finished or retired or the race committee signals a postponement, general recall or abandonment.
- 23.5 Support teams should be prepared to offer assistance to competing boats if requested to do so by the race committee.



24 TRASH DISPOSAL

Trash may be placed aboard official or support person vessels.

25 ORGANIZATION

Race officer: Arie-jan Snel

Chairman of the protest committee: Nicole de By

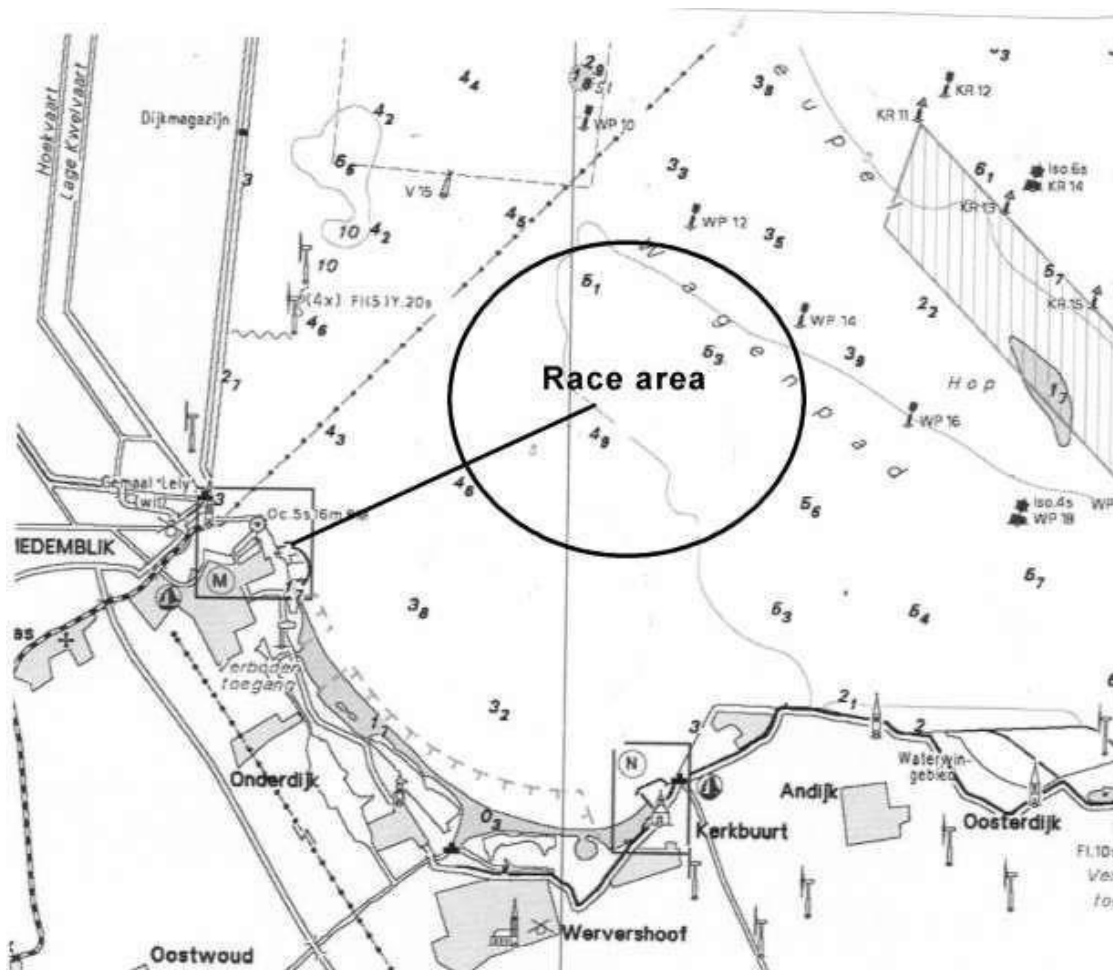
Chairman of the technical committee: TBA



SI Addendum 1 - the location of the racing area

Approximate position of the center of the course area, from the harbor entrance

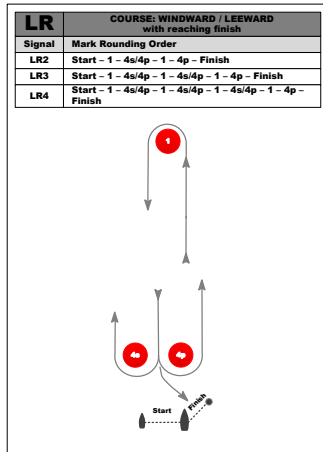
Coordinats center	Direction to center	Distance to center
052° 47,50000' N 005° 09,68550' O	052°	2 Nm / 3,65 km



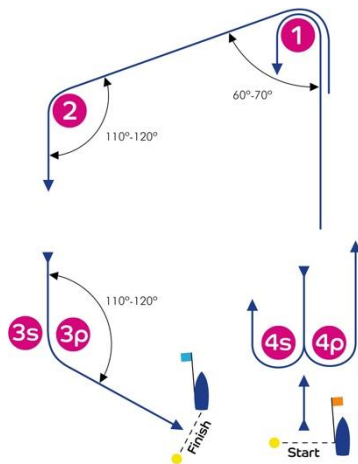


SI Addendum 2 - Courses and Marks

Course diagrams



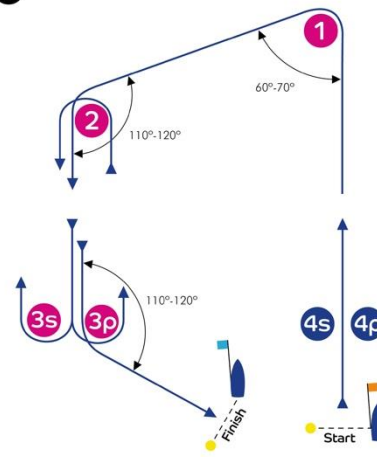
I



Course: Inner Trapezoid

Signal	Mark Rounding Order
I2	Start - 1 - 4s/4p - 1 - 2 - 3p - Finish
I3	Start - 1 - 4s/4p - 1 - 4s/4p - 1 - 2 - 3p - Finish
I4	Start - 1 - 4s/4p - 1 - 4s/4p - 1 - 4s/4p - 1 - 2 - 3p - Finish

O



Course: Outer Trapezoid

Signal	Mark Rounding Order
O2	Start - 1 - 2 - 3s/3p - 2 - 3p - Finish
O3	Start - 1 - 2 - 3s/3p - 2 - 3s/3p - 2 - 3p - Finish
O4	Start - 1 - 2 - 3s/3p - 2 - 3s/3p - 2 - 3s/3p - 2 - 3p - Finish

Marks 1, 2 and 4 (gate) will be orange cylindrical shaped inflatable buoys.

Mark 3 (gate) will be green cylindrical shaped inflatable buoys.